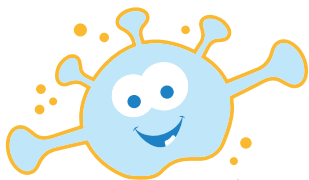


Expander Instructions



**Sugarbug
dental
& Orthodontics**

The Expander appliance we inserted in your mouth is non-removable and is designed to expand (widen) the palate. Its purpose is to correct a cross-bite, thus improving the way your top and bottom teeth meet.

The “key” that we gave you fits into the center opening of the appliance. After inserting the key in the opening, you will need to gently push it all the way to the back. It is important that you move the key as far back as it will go or it will be difficult to find the opening the next time [Refer to instructions below]. Either you or one of your parents can turn the expansion screw with the key.

The schedule for turning the appliance is as follows:

_____ One turn daily, more or less at the same time each day

_____ Two turns daily, one in the morning and one after dinner

* Please follow the suggested schedule. Too many turns may cause discomfort. Too few turns may not produce the desired result.

* It is normal to feel some pressure or discomfort after each turn. If necessary, take what you normally use for pain (i.e. Aspirin, Advil or Tylenol, etc.) and/or rinse with warm salt water. However, if the pain persists, becomes severe or causes dizziness, stop turning the appliance and call the office.

* As you continue turning the appliance, you will notice a fairly large space opening between the upper front teeth. Don't be alarmed – it means that everything is working!!! Once you are instructed to stop expanding the appliance, the space will close naturally over the next few weeks.

* Brush around the appliance after all meals and snacks, and swish and gargle. It is important to keep the area clean in order to avoid an infection. A Water-Pik is recommended and can be very helpful to clean this appliance and braces.

* Although it is rare, if the expansion appliance becomes partially detached from your teeth, stop turning the appliance, keep it in place as best as you can and give us a call during our office hours as soon as possible.

If you have any questions, please do not hesitate to call us.

Step 1 In a well-lit area tip the patient's head back.

Step 2 Place the key in the hole until it is firmly in place.

Step 3 Pushing the key towards the back of the mouth, you will notice the fender will rotate and the new hole will appear. The rotation stops when the key meets the back of the expander.

Step 4 By pushing back and down towards the tongue, remove the key. The next hole for insertion of the key should now be visible.

